



FEATURES
BROCHURE

enovis™

AIRLOCK®

FOOT PLATING SYSTEM

PLATING SYSTEMS



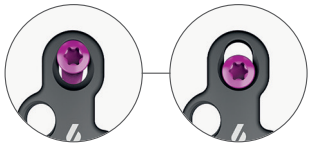
KEY FEATURES

The Airlock® plating system includes a range of osteosynthesis plates for the forefoot, midfoot and rearfoot, made of TA6V ELI Titanium alloy. It combines a low profile plate design dedicated to each indication, a compression hole, and a monoaxial and polyaxial screw system to ensure a stable and rigid fixation. The Presslock® technology provides a locking compression hole that ensures a stable construct.

LOW PROFILE DESIGN > PLATES THICKNESS OPTIMIZED ACCORDING TO THE INDICATIONS TO LIMIT SUBCUTANEOUS DISCOMFORT.

1. STANDARD COMPRESSION HOLE

- Accommodates with non-locking screws $\varnothing 3$.
- Delivers 1.5mm of additional compression.
- Corresponds to areas with high bone density.



2. THREADED HOLES

- For locking or non-locking screws.

3. VISUAL ALIGNMENT GUIDE FOR ATHRODESIS LINE

- Precise positioning of the plate in relation to the arthrodesis line.

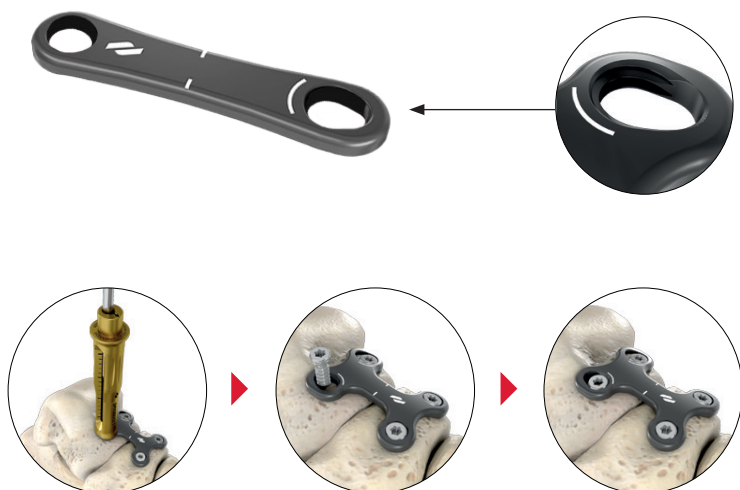
4. VISUAL ALIGNMENT GUIDE FOR COMPRESSIVE PLANTAR SCREW

- Helps the MTP plate positioning in relation to the interfragmentary screw.



PRESSLOCK® INNOVATION - PATENTED

Locking compression hole for locking screw $\varnothing 3.5\text{mm}$. Allows for an additional 1.5 mm compression before locking into a threaded hole, providing strength and stable fixation.



PRESSLOCK® 3 STEP PROCEDURE: DRILL, COMPRESS & LOCK

AVAILABLE ON



FUSION

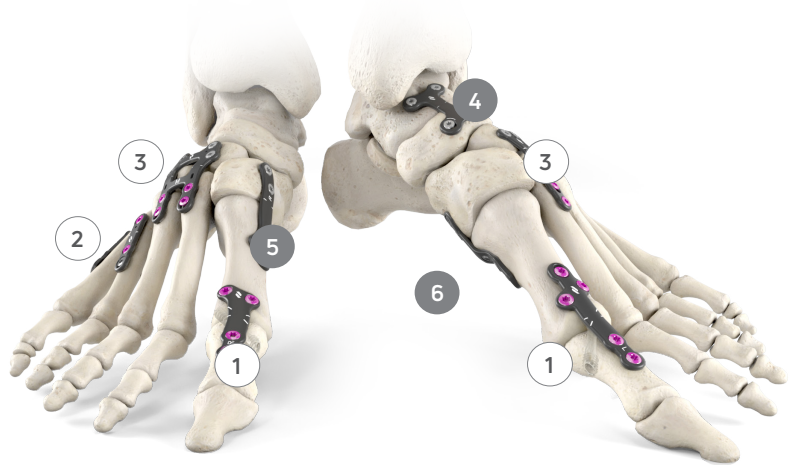


LAPIDUS



PLANTAR
LAPIDUS

AIRLOCK® RANGE



MTP ①

SHORT

· Thickness: 1.3mm

MEDIUM

· Thickness: 1.3mm

· Compression hole

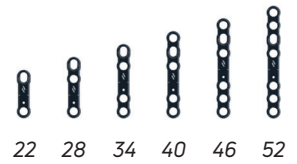
LONG

· Thickness: varies from 1.3mm to 1.6mm along the joint line

· Compression hole

· Central port hole allow for graft insertion and snap-off screw

UTILITY ②



- 6 VERSIONS**
- 2, 3, 4, 5, 6 & 7 holes
 - Thickness: 1.5mm
 - Compression hole

LISFRANC ③

31

SHORT

39

LONG

< 24 > < 27 > < 30 >

37

S

M

L

- T PLATES**
- H PLATES**
- Thickness: 1.5mm
 - Compression hole

MT BASE



- CLOSING WEDGE**
- 0mm wedge
- OPENING WEDGE**
- 3, 4 & 5mm wedge
 - Thickness: 1 mm

WITH PRESSLOCK®

FUSION

4



STRAIGHT PLATES H PLATES

- Thickness: 1.6 mm
- Presslock® compression locking hole

MONOAXIAL & POLYAXIAL SYSTEM

Ø3 & Ø3.5MM LOCKING & NON LOCKING SCREWS



- Polyaxial non locking screws
- Monoaxial locking screws
- Conical head
- Self-tapping
- Self-retaining driver / screw interface

LAPIDUS

5

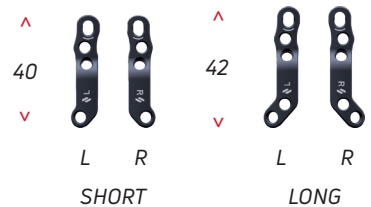


SHORT PLATES LONG PLATES

- *Thickness: 1.3mm
- *Thickness increases to 1.6 mm in the Presslock® hole area
- Presslock® compression locking hole

PLANTAR LAPIDUS

6



SHORT PLATES LONG PLATES

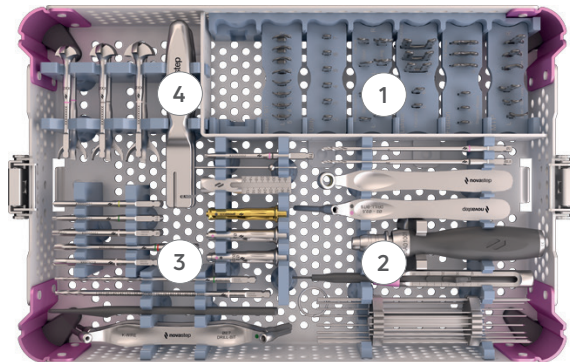
- *Thickness*: 1.6mm
- Presslock® compression locking hole

COMPLETE & MODULAR PLATFORM

Used together or separately, these instrument trays allow a comprehensive approach to the various indications of foot surgery.



AIRLOCK® TRAY



1. TRIAL PLATES

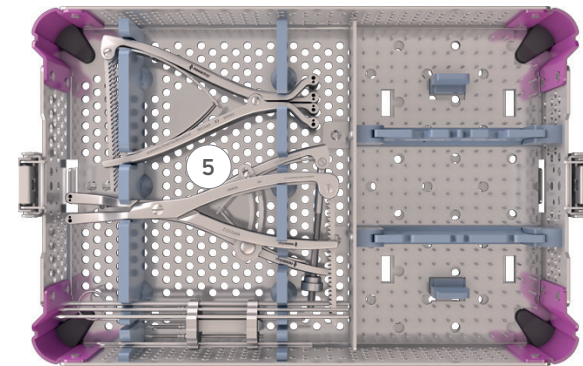
2. AIRLOCK® INSTRUMENTATION

Windowed drill guide: direct reading of the required screw length

3. NEXIS® & PECA®-C INSTRUMENTATION

4. BENDERS & REAMERS

DISTRACTOR & COMPRESSOR TRAY



5. DISTRACTORS & COMPRESSOR



OPEN ARM
DISTRACTOR



CLOSED ARM
DISTRACTOR



OPENING WEDGE
DISTRACTOR



COMPRESSOR

OPENING WEDGE DISTRACTOR



- 1. ANATOMICAL WEDGE-SHAPED OPENING**
Made possible by the ball-and-socket joint on dedicated threaded k-wires
- 2. OPENING WEDGE THREADED K-WIRES**
Allow a stable opening and a distraction close to the bone
- 3. EASY-TO-MEASURE OPENING**
After k-wires insertion adjust the initial position to 0. The sliding graduated ruler allows 0-12 mm sizing increments
- 4. EASY AND PRECISE ADJUSTMENT OF THE OPENING**
Fixed by a screwed wheel

ORDERING INFORMATION

MTP

PART NO.	DESCRIPTION
PL010134 / PL010234	SHORT - RIGHT / LEFT
PL010140 / PL010240	MEDIUM - RIGHT / LEFT
PL010152 / PL010252	LONG - RIGHT / LEFT

LISFRANC

PART NO.	DESCRIPTION
PL050101	T - SHORT
PL050102	T - LONG
PL050201	H - SMALL
PL050202	H - MEDIUM
PL050203	H - LARGE

UTILITY

PART NO.	DESCRIPTION
PL040016	2 HOLES, LENGTH 16
PL040022	3 HOLES, LENGTH 22
PL040028	4 HOLES, LENGTH 28
PL040034	5 HOLES, LENGTH 34
PL040040	6 HOLES, LENGTH 40
PL040046	7 HOLES, LENGTH 46

MT

PART NO.	DESCRIPTION
PL020100 / PL020200	CLOSING WEDGE -RIGHT / LEFT
PL020103 / PL020203	OPEN WEDGE 3 - RIGHT / LEFT
PL020104 / PL020204	OPEN WEDGE 4 - RIGHT / LEFT
PL020105 / PL020205	OPEN WEDGE 5 - RIGHT / LEFT

FUSION - PRESSLOCK®

PART NO.	DESCRIPTION
PL040117	STRAIGHT - SHORT
PL040120	STRAIGHT - MEDIUM
PL040123	STRAIGHT - LONG
PL040217	H - SHORT
PL040220	H - MEDIUM
PL040223	H - LONG

LAPIDUS - PRESSLOCK®

PART NO.	DESCRIPTION
PL030301 / PL030302	SHORT - RIGHT / LEFT
PL030401 / PL030402	LONG - RIGHT / LEFT

PLANTAR LAPIDUS - PRESSLOCK®

PART NO.	DESCRIPTION
PL080101 / PL080102	SHORT - RIGHT / LEFT
PL080201 / PL080202	LONG - RIGHT / LEFT

AIRLOCK® LOCKING SCREWS

PART NO.	DESCRIPTION
SP0130XX	Ø3mm
SP0135YY	Ø3.5mm

With XX from 10 to 30 in 2mm increments.
With YY from 10 to 40 in 2mm increments.

AIRLOCK® NON LOCKING SCREWS

PART NO.	DESCRIPTION
SP0230XX	Ø3mm
SP0235YY	Ø3.5mm

With XX from 10 to 30 in 2mm increments.
With YY from 10 to 40 in 2mm increments.

COMPRESSIVE SCREWS

PART NO.	LENGTH	SCREWS
SC0500XX	18 TO 60mm	NEXIS® Ø4
SC060YYY	30 TO 100mm	NEXIS® Ø5
PS0501XX	18 TO 60mm	PECA®-C Ø4

With XX from 18 to 60 in 2mm increments up to 50 and 5mm increments up to 60.
With YYY from 030 to 050 in 2mm increments up to 50 and 5mm up to 100.

SCREWS COLOR CODE

COLOR	SCREW
●	AIRLOCK® Ø3
●	AIRLOCK® Ø3.5
●	NEXIS® Ø4
○	NEXIS® Ø5
●	PECA®-C Ø4

K-WIRES & POSITIONING PINS - AIRLOCK®

PART NO.	DESCRIPTION
XPP01003	SPHERICAL POSITIONING PIN
-	K-WIRE Ø1,4 LG 150 TR/RD ⁽¹⁾
-	K-WIRE Ø1,6 LG 150 TR/RD ⁽²⁾
-	K-WIRE Ø1,6 LG 180 TR/RD ⁽³⁾

⁽¹⁾K-wire supplied separately - Medetechnik® K-wire (33-T10-R-14-150) or Novastep® K-wire (CKW01010) are available depending on your market.

⁽²⁾K-wire supplied separately - Medetechnik® K-wire (33-T10-R-16-150) or Novastep® K-wire (CKW01003) are available depending on your market.

⁽³⁾K-wire supplied separately - Medetechnik® K-wire (33-T10-R-16-180) or Novastep® K-wire (CKW01004) are available depending on your market.

K-WIRES & POSITIONING PINS - DISTRACTOR & COMPRESSOR

PART NO.	DESCRIPTION
SKW04001	THREADED K-WIRE Ø2,5 - OPENING WEDGE DISTRACTOR - STERILE
SKW05003	THREADED K-WIRE Ø1,6 LG 140 TR/RD - STERILE
SKW05004	THREADED K-WIRE Ø2,5 LG 140 TR/RD - STERILE

enovis.

T +33 (0) 2 99 33 86 50 F + 33 (0) 9 70 29 18 95

Legal manufacturer: Novastep® S.A.S
2 Allée Jacques Frimot | 35000 Rennes | France
contact-intfa@enovis.com
www.int.novastep.life

Copyright © 2024 Enovis Foot and Ankle

Carefully read the enclosed Instructions For Use (IFU) and all packaging label information. Devices: Implants: Class IIb-CE1639 / Instruments: Class I / Class Ir-CE1639 / Class IIa-CE1639.

REFERENCE: AIR-L-ED9-02-26-EN