



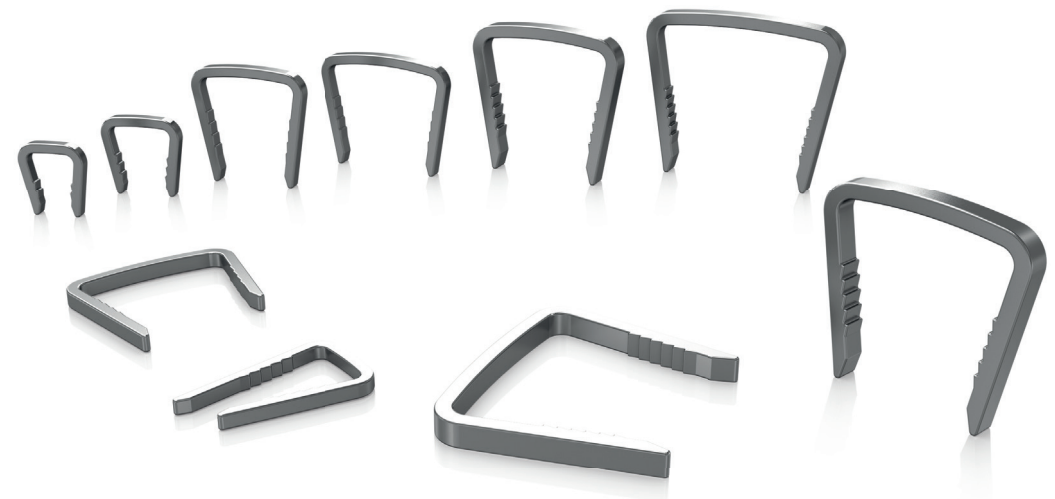
FEATURES  
BROCHURE

enovis™

# ARCAD<sup>®</sup>

OSTEOSYNTHESIS COMPRESSIVE STAPLES

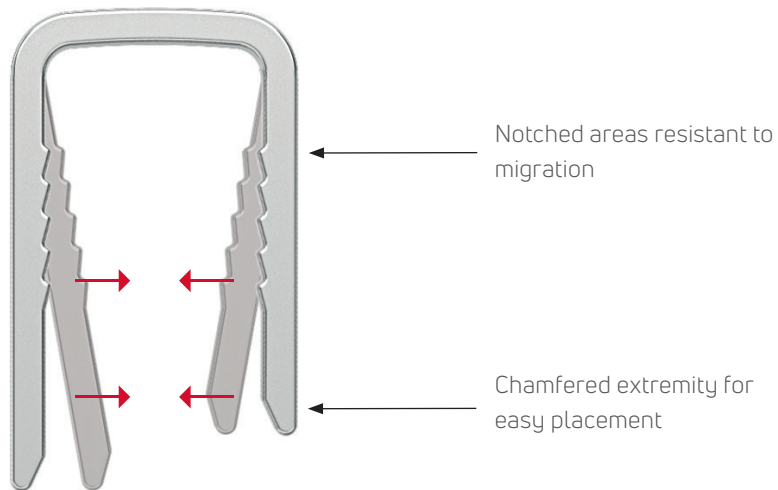
STAPLE SYSTEMS



# ARCAD<sup>®</sup>

Made of Nitinol, osteosynthesis compressive staples are indicated for the correction of bone deformities (Hallux valgus, Lesser ray deformities, Hammertoe deformity, Coalitions, Rheumatoid foot deformity, Cavovarus foot, Flatfoot), and treatment of foot joint stiffness (Hallux rigidus, Foot arthritis). Designed to facilitate fast and easy fixation, memory metal staples provide dynamic compression at the osteotomy and athrodesis site.

## KEY FEATURES



## Superelastic effect



Nitinol is an alloy made of 50% Nickel and 50% Titanium. Nitinol implants have the ability to return to their original shape immediately after unloading, inducing immediate and dynamic inter-fragmentary compression.

## FEATURES

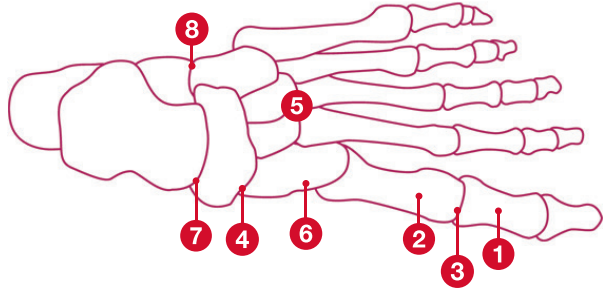
- . Shape Memory Alloy for immediate and dynamic compression.
- . No temperature management.
- . Compressive strength is generated by mechanical stress by means of Arcad<sup>®</sup> insertion forceps.
- . Low profile / atraumatic contours.

## RANGE

- Size range allows for precise fitting and anatomic compatibility.
- Width options : 8 / 10 / 15 / 18 / 20 / 25 mm.
  - Mono-Cortical or Bi-Cortical Anchorage.

Raw Material: Nitinol.

# SIZES EXAMPLE BY PROCEDURE\*



## FOREFOOT :

1. Akin Osteotomy.....	08/10
2. Bunion.....	10
3. MTP Arthrodesis.....	15/18

## MIDFOOT :

4. Naviculocuneiform Arthrodesis.....	15/18
5. Lisfranc Arthrodesis.....	15/18
6. Lapidus Arthrodesis.....	15/18

## REARFOOT :

7. Talo-Navicular Arthrodesis.....	20/25
8. Calcaneo-Cuboidal Arthrodesis.....	20/25

### MTP ARTHRODESIS



### AKIN OSTEOTOMY



### LISFRANC ARTHRODESIS



\*Size choice example to be adjusted at the surgeon's discretion according to the patient anatomy

# ARCAD® INSTRUMENTATION

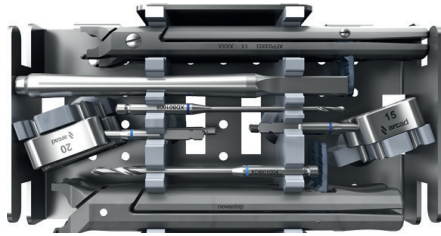
## INTUITIVE INSTRUMENTATION

Fast insertion : Drill, Measure, Deploy and Insert. Repositioning and per-operative removal facilitated.

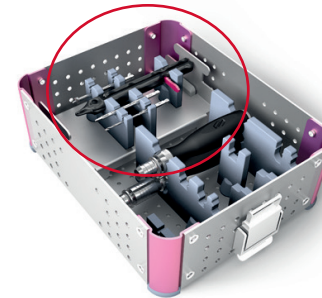
## MODULAR SOLUTION

The Arcad® instrumentation is delivered in specific, intuitively configured modules for forefoot, midfoot and rearfoot applications by means of the EXACT and COMPLETE sterilization tray platforms, which include the Lync intramedullary implants, Arcad® staples, and Nexis screws.

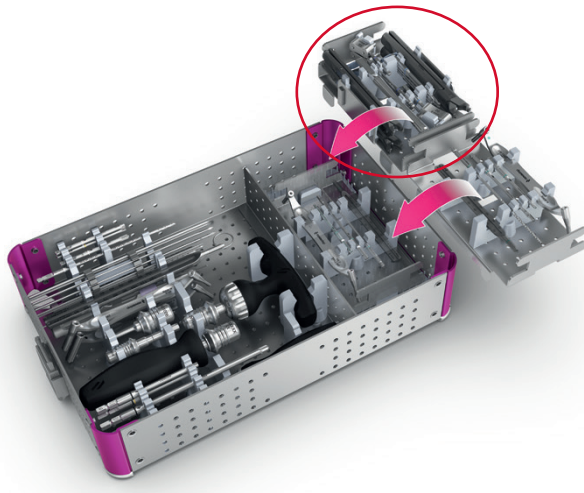
Arcad® module



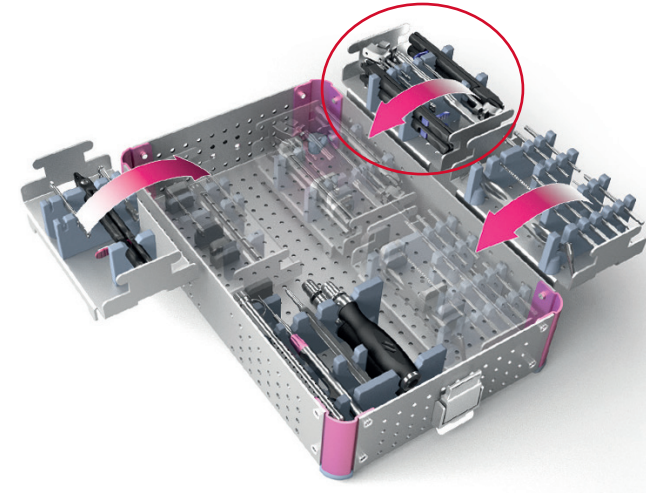
ForefootEXACT



RearfootCOMPLETE



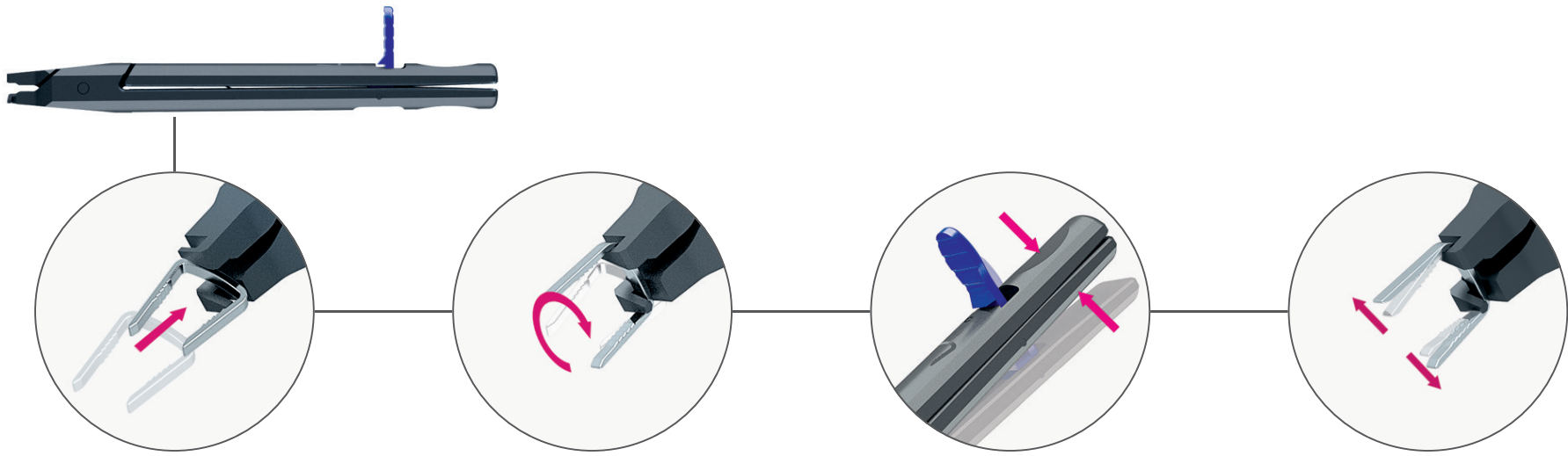
ForefootCOMPLETE



# ARCAD® INSTRUMENTATION

## ARCAD FORCEPS: ONE CLICK EXPANSION

Arcad® Forceps deliver a specific compression strength for each implant size. The implantation forceps for the Arcad® Staples feature Novastep's unique Lock and Load design that permits convenient, reproducible deployment and rapid insertion.



# REFERENCES

## ARCAD® COMPRESSIVE STAPLES

REFERENCE	DESCRIPTION	BRIDGE WIDTH (mm)	LEG LENGTH (mm)	WIRE DIMENSIONS (mm)
CS020808	COMPRESSIVE STAPLE 08-08-08	8	8-8	1,2 X 1,5
CS010909	COMPRESSIVE STAPLE 10-09-09	10	9-9	1,2 X 1,5
CS011214	COMPRESSIVE STAPLE 10-12-14	10	12-14	1,2 X 1,5
CS011416	COMPRESSIVE STAPLE 10-14-16	10	14-16	1,2 X 1,5
CS011518	COMPRESSIVE STAPLE 10-15-18	10	15-18	1,2 X 1,5
CS031212	COMPRESSIVE STAPLE 15-12-12	15	12-12	1,3 X 1,8
CS031414	COMPRESSIVE STAPLE 15-14-14	15	14-14	1,3 X 1,8
CS041212	COMPRESSIVE STAPLE 18-12-12	18	12-12	1,3 X 1,8
CS041414	COMPRESSIVE STAPLE 18-14-14	18	14-14	1,3 X 1,8
CS041416	COMPRESSIVE STAPLE 18-14-16	18	14-16	1,3 X 1,8
CS041618	COMPRESSIVE STAPLE 18-16-18	18	16-18	1,3 X 1,8
CS041818	COMPRESSIVE STAPLE 18-18-18	18	18-18	1,3 X 1,8
CS051818	COMPRESSIVE STAPLE 20-18-18	20	18-18	2,5 X 1,6
CS062020	COMPRESSIVE STAPLE 25-20-20	25	20-20	2,5 X 1,6

## STATIC STAPLES - IN ADDITION TO ARCAD® RANGE

REFERENCE	DESCRIPTION
FS010008	STATIC STAPLE 26° - 8 mm
FS010010	STATIC STAPLE 26° - 10 mm
FS010108	STATIC STAPLE 90° - 8 mm
FS010110	STATIC STAPLE 90° - 10 mm



**enovis**

T +33 (0) 2 99 33 86 50 F + 33 (0) 9 70 29 18 95

Legal manufacturer: Novastep® S.A.S  
2 Allée Jacques Frimot | 35000 Rennes | France  
contact-intfa@enovis.com  
www.int.novastep.life

Copyright © 2024 Enovis Foot and Ankle

*Carefully read the enclosed Instructions For Use (IFU) and all packaging label information. Devices: Implants: Class IIb-CE1639 / Instruments: Class I / Class Ir-CE1639 / Class IIa-CE1639.*

REFERENCE: ARC-L-ED7-03-26-EN