



FEATURES
BROCHURE

enovis™

NEXIS® MIS

BEVELED COMPRESSIVE Ø 2.7MM SCREW

SCREW SYSTEMS

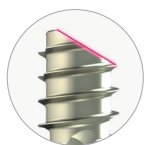


KEY FEATURES

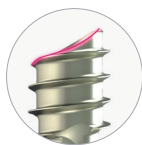
The Nexis® MIS Ø 2.7 mm is a titanium alloy cannulated compressive screw featuring an elliptic beveled head.

1. CANNULATED SCREW: *EXTRA-SHARP* Ø1.2 K-WIRE

2. ELLIPTIC BEVELED HEAD (30°)



Maximizes cortical anchorage and preservation of soft tissue



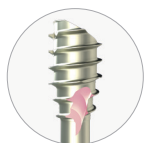
Allows for additional angular rotation to preserve the burial of the head

3. EXACT2-T RECESS



Specific & universal

4. POSITIVE LOCKING CHANNEL



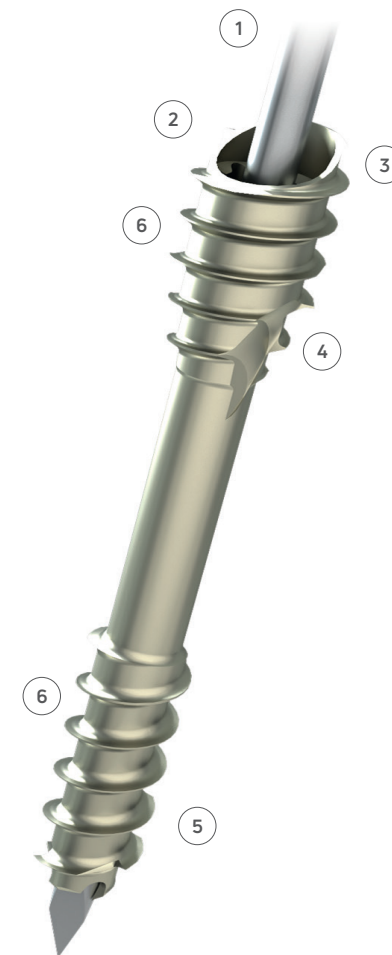
5. SELF-DRILLING & SELF-TAPPING



Penetrating sharp tips facilitate insertion

6. DEEP DUAL THREAD

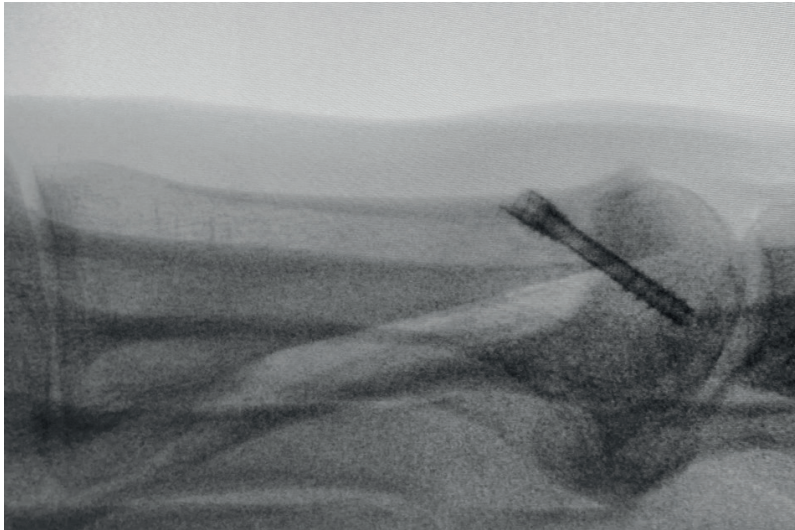
Maximized anchorage & compression



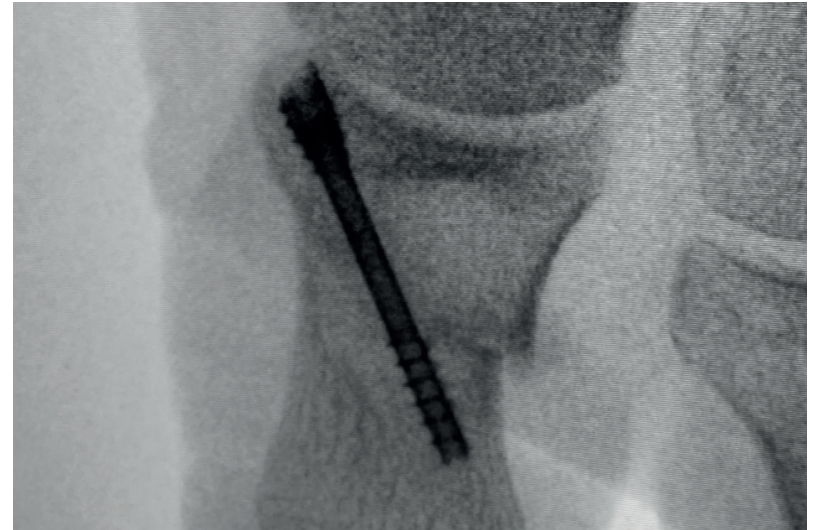
Ø2.7 NEXIS® MIS

INDICATIONS

The osteosynthesis screws are indicated for arthrosis, hallux valgus and other bone alignment defaults (pes cavus, flatfoot, malalignment secondary to previous trauma).

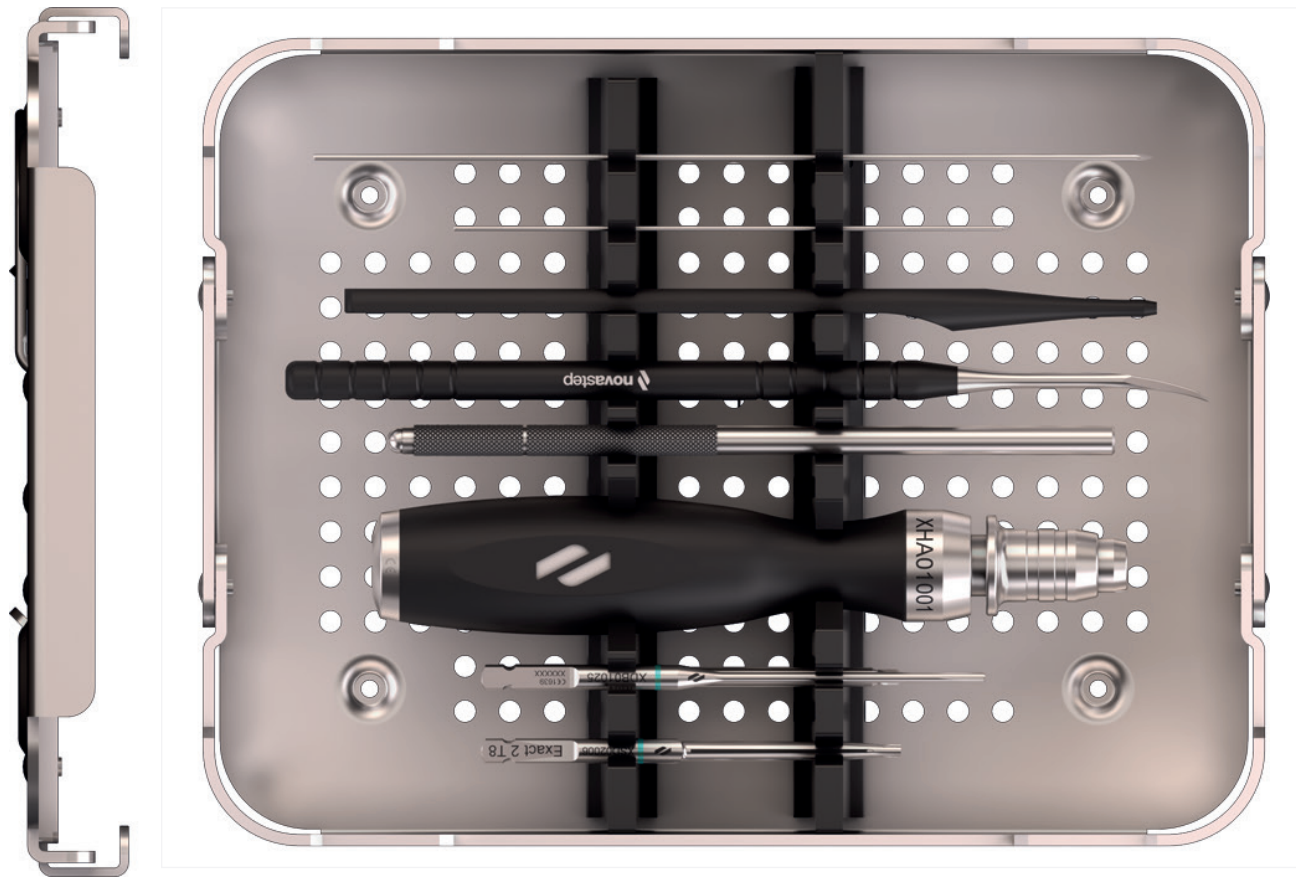


CHEVRON OSTEOTOMY



AKIN OSTEOTOMY

MINI TRAY



**Extra-sharp K-wire & Exact2-T8 AO screwdriver tip are optional in the Nexis® ForefootCOMPLETE & ForefootEXACT trays*

OPTIMIZED INSTRUMENTATION



EXTRA-SHARP Ø 1.2 K-WIRE

Ø 1.2 mm: provides greater stiffness*

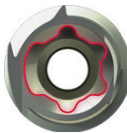
Sharpened tip: allows for easy angulated insertion



EXACT2-T8 SCREWDRIVER

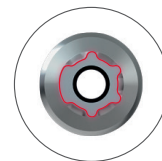
RECESS

- **Specific:** Easy indexing of the Exact2-T8 AO screwdriver tip
- **Accurate:** Ensures unique positioning of the screwdriver tip
- **Universal:** Possible removal with standard instrumentation



SCREWDRIVER TIP

The laser marking and bevel of the Exact2-T8 AO screwdriver tip facilitate the proper placement of the screw head.



LASER MARKING BEVEL

*Greater stiffness than a Ø0.9 k-wire.

NEXIS® MIS Ø2.7mm SCREWS

PART NO.	LENGTH (mm)
SC090014	14
SC090016	16
SC090018	18
SC090020	20
SC090022	22
SC090024	24
SC090026	26
SC090028	28
SC090030	30

K-WIRES Ø1.2mm

PART NO.	DESCRIPTION
-	K-WIRE Ø1,2 LG 80 TR/RD ⁽¹⁾
-	K-WIRE Ø 1,2 LG 100 TR/RD ⁽²⁾
-	K-WIRE Ø 1,2 LG 150 TR/RD ⁽³⁾

⁽¹⁾ K-wire supplied separately - Medetechnik® K-wire (33-T10-R-12-080) or Novastep® K-wire (CKW01017) are available depending on your market.

⁽²⁾ K-wire supplied separately - Medetechnik® K-wire (33-T10-R-12-100) or Novastep® K-wire (CKW01014) are available depending on your market.

⁽³⁾ K-wire supplied separately - Medetechnik® K-wire (33-T10-R-12-150) or Novastep® K-wire (CKW01015) are available depending on your market.

NOTES

enovis.

T +33 (0) 2 99 33 86 50 F +33 (0) 9 70 29 18 95

Legal manufacturer: Novastep® S.A.S
2 Allée Jacques Frimot | 35000 Rennes | France
contact-intfa@enovis.com
www.int.novastep.life

Copyright © 2024 Enovis Foot and Ankle

Carefully read the enclosed Instructions For Use (IFU) and all packaging label information. Devices: Implants: Class IIb-CEI639 / Instruments: Class I / Class Ir-CEI639 / Class IIa-CEI639.

REFERENCE: NEX-MIS-L-ED4-06-25-EN