

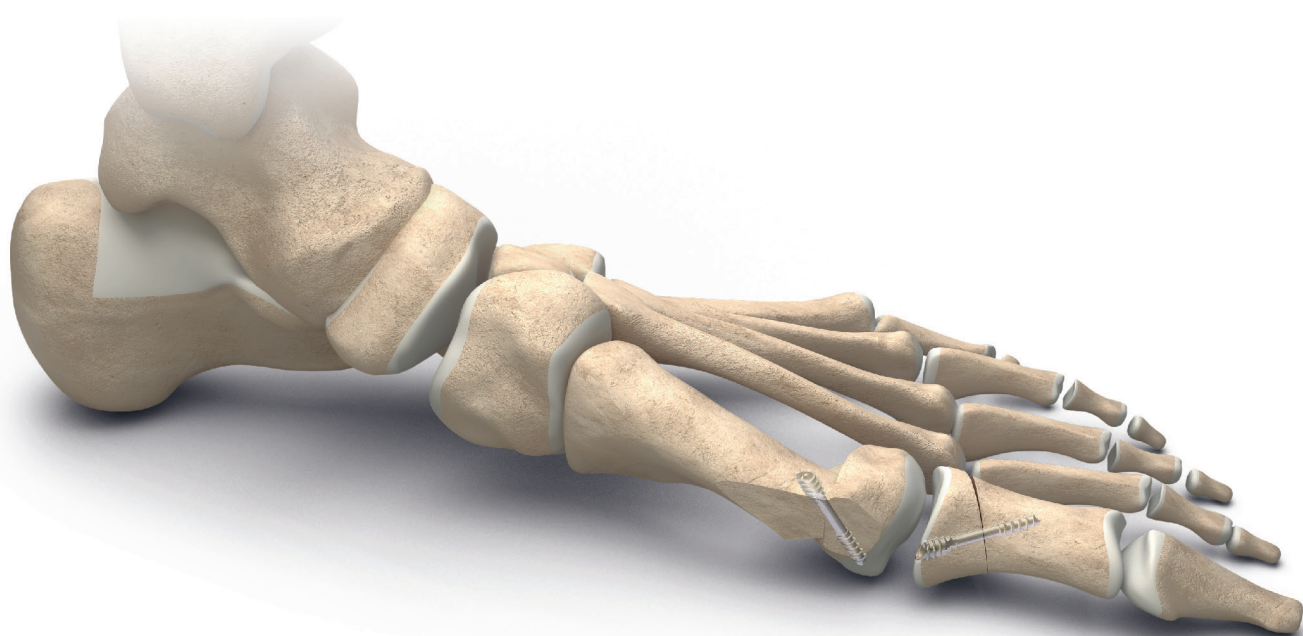
# nexis<sup>®</sup> | MIS



## BROCHURE

FOREFOOT

**Nexis<sup>®</sup> MIS Ø 2.7 mm**  
Beveled compressive screws



- . Specific & universal Exact2-T Recess
- . Elliptic beveled head
- . *Extra-Sharp* Ø1.2 K-wire

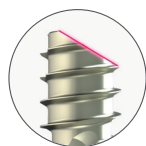
*Creating  
Better  
Together™*

The Nexis<sup>®</sup> MIS  $\varnothing$  2.7 mm is a titanium alloy **cannulated compressive screw** featuring an **elliptic beveled head**.

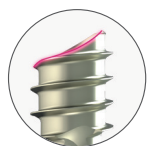
## Keys features

### 1 Cannulated screw: *Extra-Sharp $\varnothing$ 1.2 K-Wire*

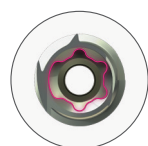
### 2 Elliptic beveled head



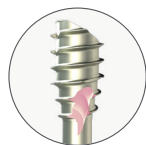
**Bevel (30°):**  
Maximization of cortical anchorage and preservation of soft tissue



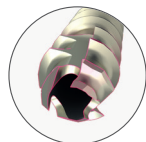
**Elliptic bevel:**  
Allows for additional angular rotation to preserve the burial of the head



**Exact2-T Recess:**  
Specific & universal



**4 Positive locking channel**

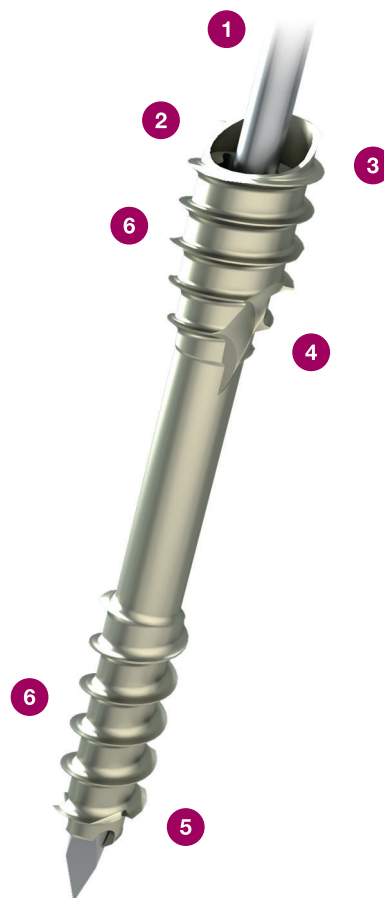


**5 Self-drilling & self-tapping:**

- Penetrating sharp tips
- Facilitated insertion

### 6 Deep dual thread

• Maximized anchorage & compression



$\varnothing$ 2.7  
nexis<sup>®</sup>  
MIS

**Optimized range**  
Screws available in lengths  
of 14 to 30 mm

# Optimized instrumentation

## Extra-Sharp Ø 1.2 K-Wire

Ø 1.2 mm: provides greater stiffness\*  
Sharpened tip: allows for easy angulated insertion



## Exact2-T8 screwdriver tip

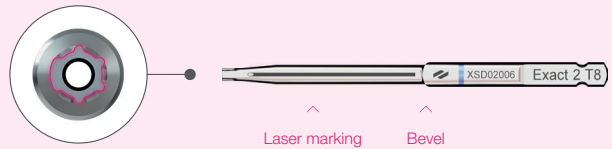
Exact2-T8 recess:

- . **Specific:** easy indexing of the Exact2-T8 AO screwdriver tip
- . **Universal:** possible removal with standard instrumentation



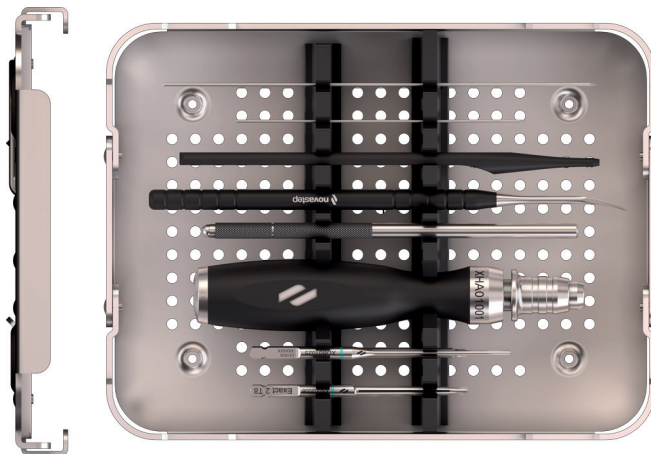
Exact2-T8 recess ensures the unique positioning of the screwdriver tip.

The laser marking and bevel of the Exact2-T8 AO screwdriver tip facilitate the proper placement of the screw head.



\*Greater stiffness than a Ø0.9 k-wire.

## Nexis® MIS Mini Tray



Extra-sharp K-wire & Exact2-T8 AO screwdriver tip: optional in the **Nexis® ForefootCOMPLETE & ForefootEXACT** trays

## References

### Nexis<sup>®</sup> MIS Ø 2.7 mm screws



Length (mm)	Reference
14 mm	SC090014
16 mm	SC090016
18 mm	SC090018
20 mm	SC090020
22 mm	SC090022
24 mm	SC090024
26 mm	SC090026
28 mm	SC090028
30 mm	SC090030

### K-Wire Ø 1.2 mm

Description	Reference
K-Wire Ø 1.2 lg 80 TR/RD *	CKW01017 <sup>(1)</sup>
K-Wire Ø 1.2 lg 100 TR/RD	CKW01014 <sup>(2)</sup>
K-Wire Ø 1.2 lg 150 TR/RD **	CKW01015 <sup>(3)</sup>

<sup>(1)</sup> Medetechnik<sup>®</sup> K-wire (33-T10-R-12-080) is also available depending on your market.

<sup>(2)</sup> Medetechnik<sup>®</sup> K-wire (33-T10-R-12-100) is also available depending on your market.

<sup>(3)</sup> Medetechnik<sup>®</sup> K-wire (33-T10-R-12-150) is also available depending on your market.

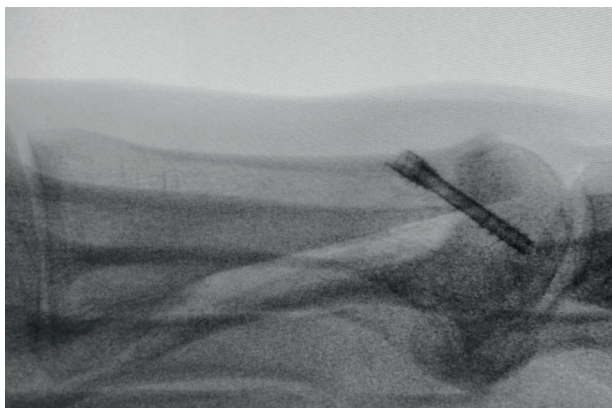
\* Optional in the ForefootCOMPLETE

\*\* Optional in the Nexis<sup>®</sup> MIS Mini tray

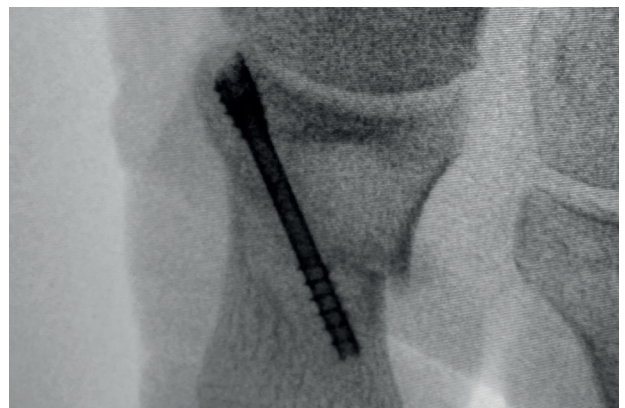
## Indications

The osteosynthesis screws are indicated for arthrosis, hallux valgus and other bone alignment defaults (pes cavus, flatfoot, malalignment secondary to previous trauma).

### Chevron Osteotomy



### Akin Osteotomy



#### Please note:

Carefully read the enclosed Instructions For Use (IFU) and all packaging label information. Devices: Implants: Class IIb-CE1639 / Instruments: Class I / Class Ir-CE1639 / Class IIa-CE1639.

#### Novastep:

2, Allée Jacques Frimot - 35000 RENNES - France  
Tel.: + 33 (0) 2 99 33 86 50 / Fax: + 33 (0) 9 70 29 18 95  
contact@novastep-ortho.com / www.int.novastep.life

Reference : Nex-MIS-L-Ed3-07-24-EN