



FEATURES
BROCHURE

enovis™

LYNC®

PIP & DIP INTRAMEDULLARY IMPLANTS

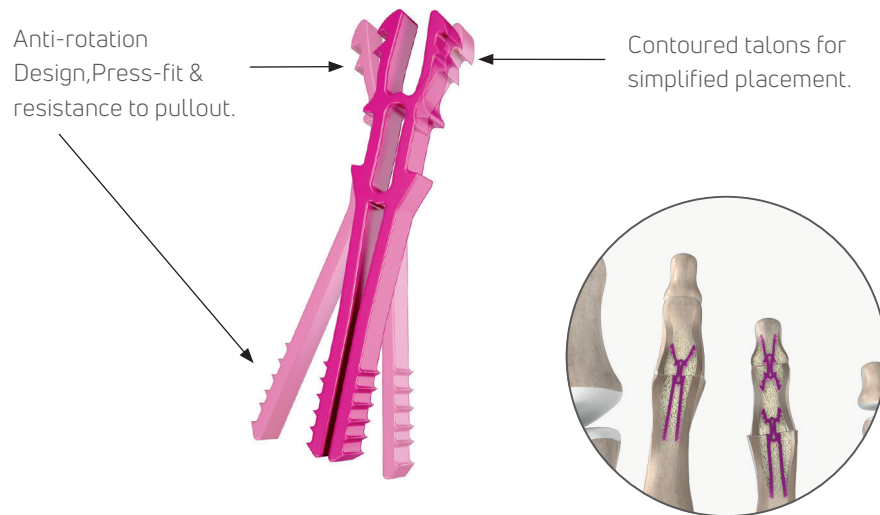
HAMMER TOE SYSTEMS



LYNC®

Lync® is a range of intramedullary implant specifically designed for arthrodesis of the proximal and distal interphalangeal joint of the foot. It is particularly recommended for the treatment of hammertoes. Its anti rotation design reduce the risks of rotation and pullout. Its expansion capacity and the notched grooves allow effective intraoperative anchorage to prevent migration.

KEY FEATURES



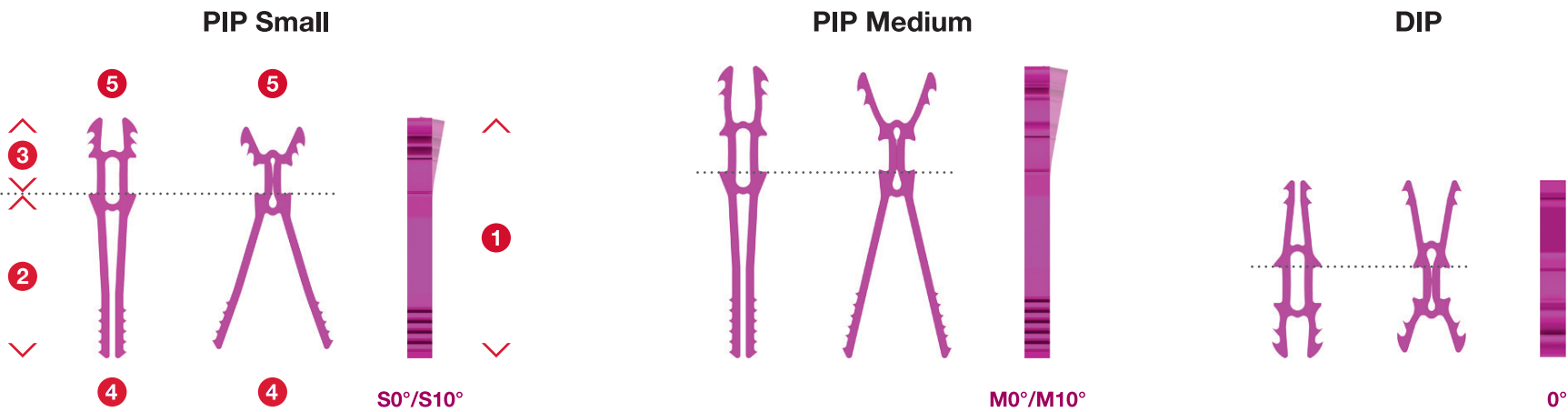
INDICATION

Intramedullary implants are indicated for arthritis and bone alignment defaults (hammertoe, claw toe and mallet toe) in toes.

FEATURES

- . Initial anchorage by means of mechanical expansion of the implant.
- . Interphalangeal gap reduction by compression, anchorage due to press-fit fixation.
- . Mechanical resistance to pullout and rotation.
- . No freezing. The implant may be used at ambient temperature.
- . Anodized pure titanium (Nickel free) - Radiopaque.

RANGE



	SMALL	MEDIUM	DIP
TOTAL LENGTH	16 mm	20 mm	12 mm
PROXIMAL LENGTH	11 mm	13 mm	6 mm
DISTAL LENGTH	5 mm	7 mm	6 mm
PROXIMAL OPENING	2 / 8 mm	2 / 8.5 mm	3.5 / 4 mm
DISTAL OPENING	3.5 / 5.5 mm	3.5 / 4.5 mm	2 / 5 mm

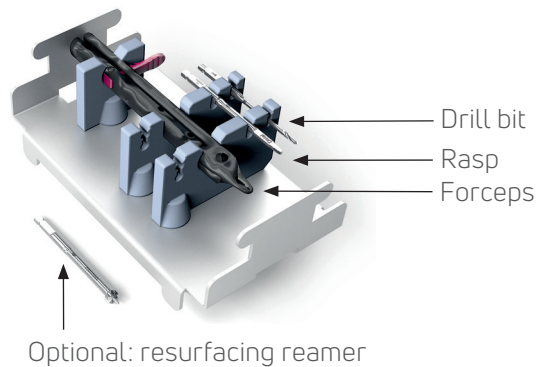


LYNC® INSTRUMENTATION

ONLY THREE INSTRUMENTS REQUIRED

The Lync® instrumentation, arranged in a dedicated module, consists of a drill, rasp and a set of lync forceps. The surgical technique is simplified and operative time is reduced.

Lync® module

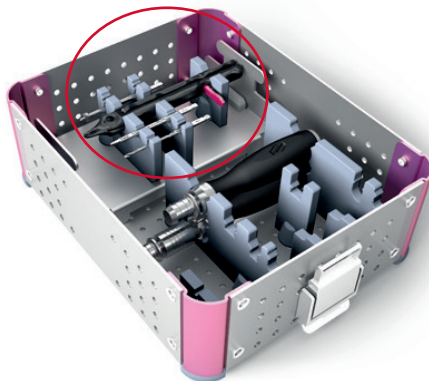


MODULAR SOLUTION

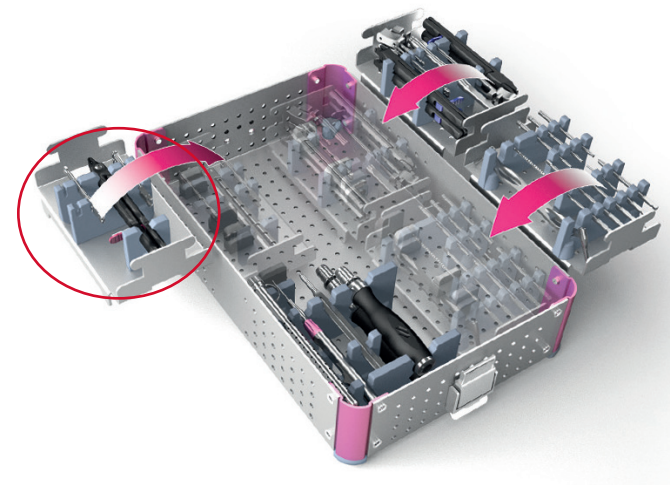
Forefoot instrumentation is built around a modular and intuitive platform to consolidate all or part of the Forefoot range, which includes the Lync®, Arcad® Staples, Nexis® Screws. Each product specific instrumentation module may be individually placed in the forefootEXACT half-tray or grouped with other modules in the forefootCOMPLETE tray.

This modular solution adapts to meet specific surgeon requirements and facilitates operating room logistics and workflow.

ForefootEXACT



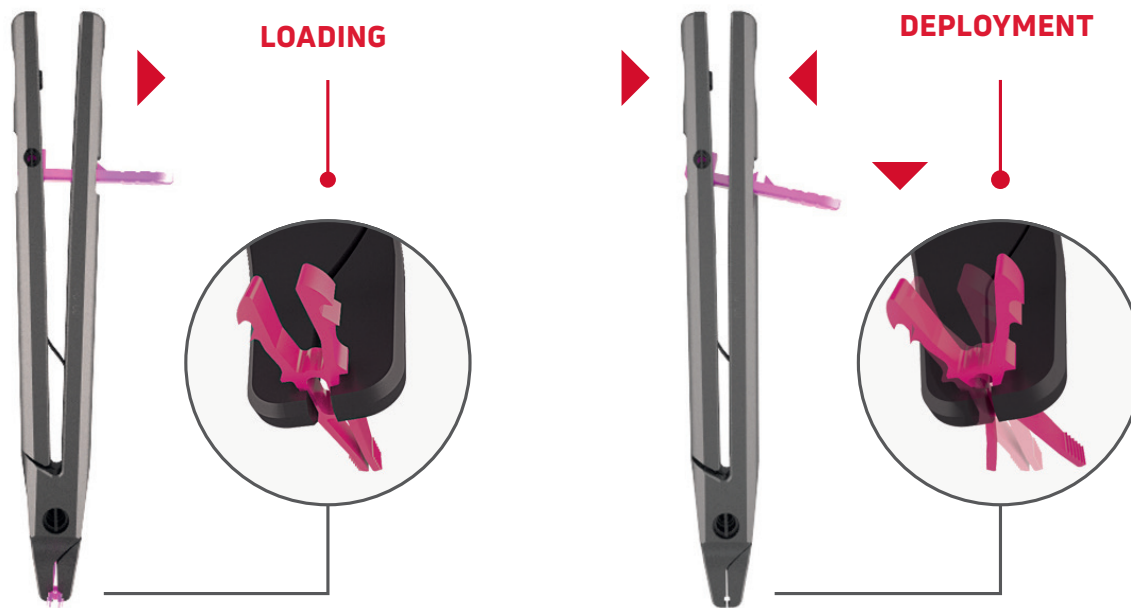
ForefootCOMPLETE



LYNC® INSTRUMENTATION

LYNC® FORCEPS: LOAD AND DEPLOY

Designed for one-handed operation, the forceps hold the implant for easy insertion into the intramedullary canal and permit rapid deployment of the legs by means of a single click.



REFERENCES

LYNC®

REFERENCE	DESCRIPTION
CM010030	LYNC® S0
CM010031	LYNC® S10
CM010010	LYNC® M0
CM010011	LYNC® M10
CM010040	LYNC® DIP

INSTRUMENTATION

REFERENCE	DESCRIPTION
XFPO4001	FORCEPS
XDB01003	DRILL BIT Ø2.3
XRA01002	RASP
XHA01001	AO HANDLE
XRE01002	SURFACINF REAMER - OPTIONAL

NOTES



T +33 (0) 2 99 33 86 50 F + 33 (0) 9 70 29 18 95

Legal manufacturer: Novastep® S.A.S
2 Allée Jacques Frimot | 35000 Rennes | France
contact-intfa@enovis.com
www.int.novastep.life

Copyright © 2024 Enovis Foot and Ankle

Carefully read the enclosed Instructions For Use (IFU) and all packaging label information. Devices: Implants: Class IIb-CE1639 / Instruments: Class I / Class Ir-CE1639 / Class IIa-CE1639.

REFERENCE: LYN-L-ED8-06-25-EN