



FEATURES
BROCHURE

enovis™

PECAPLASTY® WIRES FIRST™

PERCUTANEOUS BUNION CORRECTION

BUNION SYSTEMS



KEY FEATURES

The Pecaplasty® Wires First™ system streamlines percutaneous Hallux Valgus correction by simplifying one of the most technical steps of the procedure. With its easy positioning on the foot, the Pecaplasty® Wires First™ Targeting Guide enables precise and reproducible K-wire placement before the osteotomy, supporting consistent workflow and facilitating a controlled surgical approach.

TARGETING GUIDE

REFERENCE WIRE

Inserted into the osteotomy location to correctly position the guide and targets the proximal wire trajectory

REFERENCE WIRE LOCKING DIAL

Locks the reference wire in position

LOCKING DIAL

Locks the targeting arc in position

PARALLEL HOLES

Guided placement of K-Wires through the sleeves

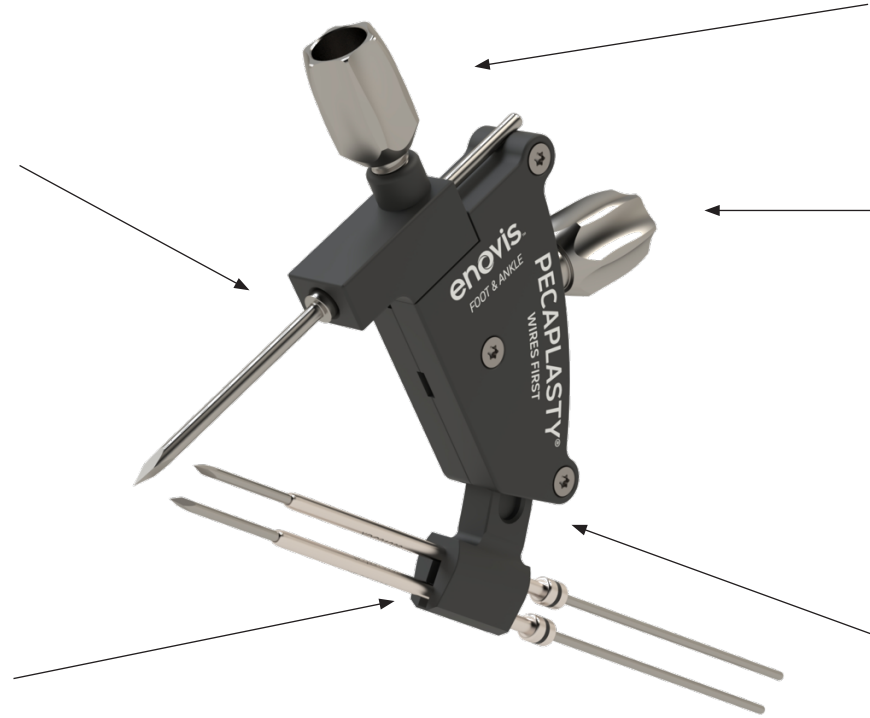
TARGETING ARC

Adjustable positioning based on the entry point

HEAD SHIFTING DEVICE

ADJUSTABLE OFFSET

Adjustable positioning depending on surgeon's preference



WIRES FIRST™ - SIMPLICITY AT LAST

SIMPLIFIED WORKFLOW



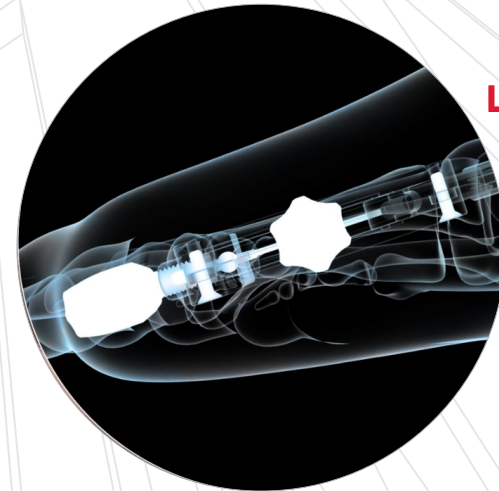
EFFORTLESS WIRES INSERTION



ADJUSTABLE TRANSLATION

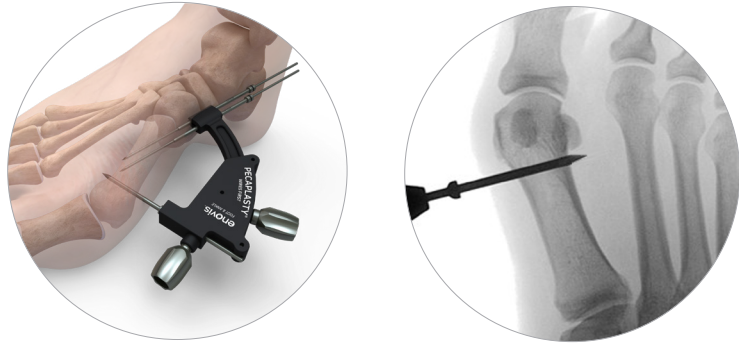


LIGHTWEIGHT & RADIOLUCENT



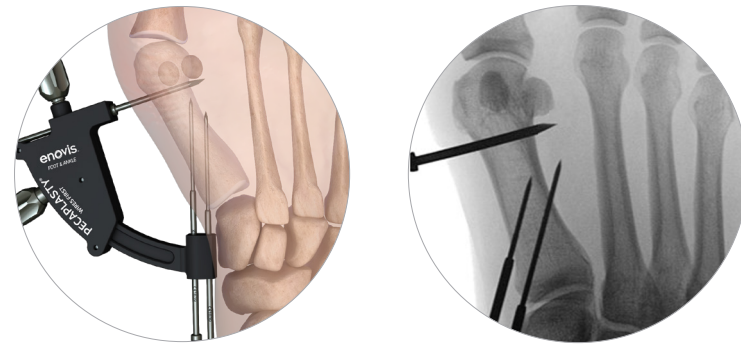
INTUITIVE WORKFLOW

1. REFERENCE WIRE INSERTION & GUIDE ATTACHEMENT



POSITION the guide on the reference wire, which marks the osteotomy location. The reference wire is centered on the metatarsal and inserted until its depth reaches the lateral cortex of the lateral sesamoid.

2. ACCURATE PLACEMENT OF K-WIRES



ADJUST the arc around its center of rotation to allow proper placement of the k-wires.

- Insertion point must be as proximal as possible to ensure bicortical fixation
- Proximal/lateral K-wire points to Reference wire

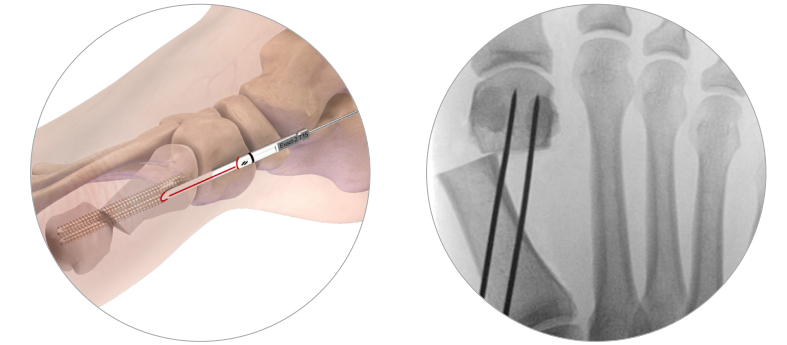
3. ADJUSTABLE TRANSLATION OF METATARSAL HEAD



TRANSLATE the metatarsal head using the head shifting device and adjustable offset.

- Planned correction is visualised through the orientation of the reference wire
- Intuitive head-shifting device with full control of metatarsal translation

4. ADVANCEMENT OF K-WIRES & SCREW INSERTION



SECURE the correction by pushing the two Ø 1.6mm K-wires into the metatarsal head. Overdrill and insert the PECA® screws.

enovis.

T +33 (0) 2 99 33 86 50 F +33 (0) 9 70 29 18 95

Legal manufacturer: Novastep® S.A.S
2 Allée Jacques Frimot | 35000 Rennes | France
contact-intfa@enovis.com
www.int.novastep.life

Copyright © 2064 Enovis Foot and Ankle

Carefully read the enclosed Instructions For Use (IFU) and all packaging label information. Devices: Implants; Class IIb-CE1639 / Instruments: Class I / Class Ir-CE1639 / Class IIa-CE1639.

REFERENCE: PECA-WF-L-ED1-05-26-EN